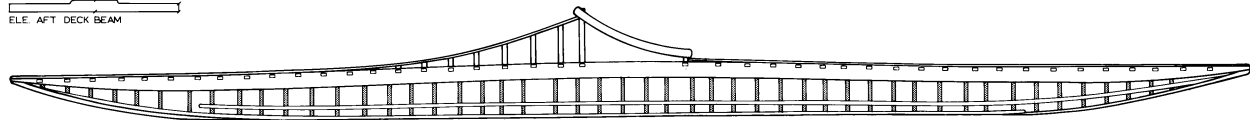


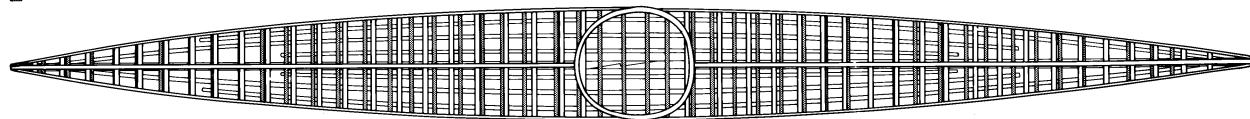
THIS NARROW AND SHALLOW KAYAK WAS USED MOSTLY ON RIVERS AND LAKES FOR HUNTING MUSKRAT AND CARIBOU, BUT ALSO FOR NETTING FISH AND HUNTING SEAL AND BALUGA WHALE IN OPEN WATER. GREAT SKILL AND DEXTERITY WAS NECESSARY TO PREVENT CAPSIZES.

THE SMALL PUCKER MARKS ON THE DECK ARE CAUSED BY AN INTERNAL ZIG-ZAG LINE, PARTIALLY THROUGH THE SKIN COVER THAT FUNCTIONS AS A BASTING STITCH IN INITIALLY DRAWING THE COVER TIGHTLY OVER DECK BEFORE THE FINAL LONGITUDINAL SEAM IS SEWN.

SECTIONS	OFFSETS - CENTIMETERS TO OUTSIDE OF SKIN												
	STEM	1	2	3	4	5	6	7	8	9	10	11	STERN
SHEER	20.0	18.9	18.8	20.2	22.1	23.7	24.9	25.1	24.0	22.3	20.8	20.7	22.3
CHINE 3		14.6	13.5	13.3	6.8	7.4	7.3	7.7	7.6	7.4	5.4	16.5	
CHINE 2		11.4	7.6	7.4	2.3	2.4	2.6	3.2	3.1	2.6			
CHINE 1				2.5	1.8	1.9	1.9	2.6	2.6	1.7			
KEELSON	16.2	9.4	4.2	1.0	1.6	1.6	1.7	2.5	2.5	1.5	2.5	11.9	18.2
SHEER	1.3	5.9	9.9	15.7	19.3	22.5	23.8	22.7	20.7	17.3	12.6	6.1	1.4
CHINE 3		4.3	7.8	13.7	16.3	16.7	19.5	18.8	17.2	13.6	6.1	4.5	
CHINE 2		2.0	5.0	12.4	11.9	12.0	13.1	12.8	10.6	8.9			
CHINE 1					9.4	5.9	5.9	6.6	6.3	5.2	4.8		
KEELSON	1.4	1.4	1.4	1.4	1.4	1.4	1.4	1.4	1.4	1.4	1.4	1.4	1.4



■ RIBS    - - - - - SEAMS



## NORTH ALASKA, KOTZEBUE SOUND-TYPE KAYAK

LOWIE MUSEUM, UNIVERSITY OF CALIFORNIA, BERKELEY

LM 2-6349  
 LENGTH 17' 2.9" 5256  
 BEAM 18.8" 47.8  
 DEPTH TO SHEER 9.4" 24.0  
 WEIGHT 26.9 lbs 12.2 kg  
 DONATED BY ALASKA COMMERCIAL CO., 1904;  
 COLLECTED PRE - 1898  
 SCALE ( IN CENTIMETERS ) 1 : 8  
 LWL (LOAD WATERLINE) BASED ON 68 kg (150 lbs)  
 MAN SEATED 2650 cm FROM BOW  
 DISPLACEMENT TO SHEER 264.7 lbs 283.4 kg  
 CP (PRISMATIC COEFFICIENT) .67  
 THEORETICAL TOP SPEED (KNOTS) 4.9  
 LOADED KAYAK UNSTABLE AT 17° HEEL

### LINEs AND CONSTRUCTION DETAILS

SHEET 1 OF 1  
 LINES TAKEN OFF BY DAVID W. ZIMMERLY,  
 DECEMBER 1981  
 DRAWN BY KATHRYN P. IRELAND, 1982