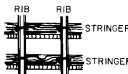


SEAT BATTEN



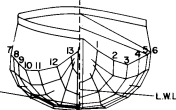
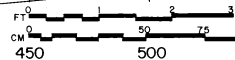
FULL SIZE CROSS SECTION



RIB RIB STRINGER

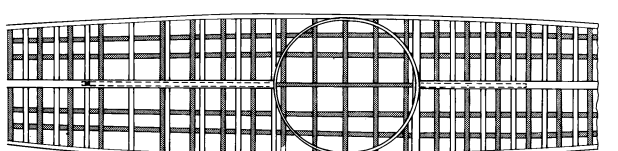
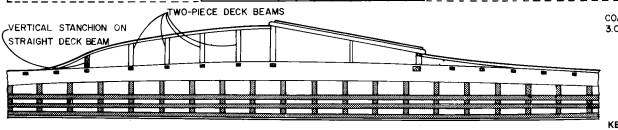
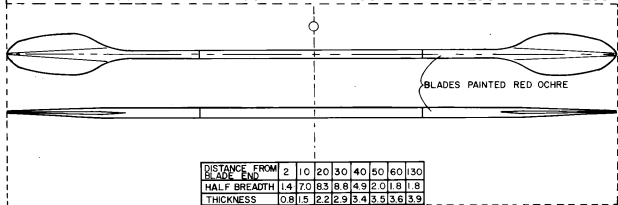
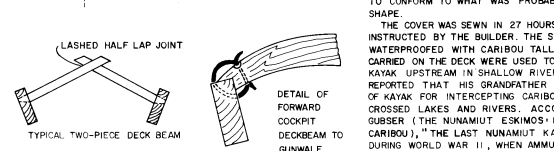
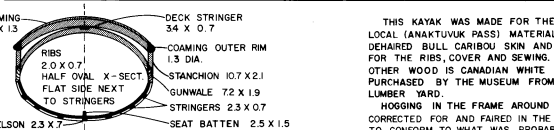
RIB RIB STRINGER

575



OFFSETS - CENTIMETERS TO OUTSIDE OF SKIN

SECTIONS	STEM	20	30	100	150	200	250	300	350	400	450	500	550	575 STERN
DECKRIDGE	32.4	28.7	24.8	22.5	23.1	35.0	41.0	38.1	26.5	23.3	21.0	20.0	22.6	26.5
SHEER	27.5	23.2	21.8	23.6	25.5	26.4	26.4	24.8	22.0	19.1	18.0	21.0	25.5	
GUNWALE	22.6	16.7	15.0	16.9	19.0	19.3	18.9	17.4	16.0	12.3	12.0	15.0	23.0	
CHINE 3						11.3	12.4	12.6	12.2	11.5	12.0			
CHINE 2	20.1	13.8	8.5	7.6	7.5	7.6	7.0	7.0	7.0	7.5	8.5			
CHINE 1	16.9	10.4	5.4	5.2	5.0	4.0	4.0	4.0	4.1	4.0	4.0	11.0	20.0	
KEELSON	13.6	7.5	4.6	3.4	2.9	3.0	2.7	2.4	2.5	2.5	2.5	9.5	17.5	
DECKRIDGE	0.0	0.0	0.0	0.0	0.0	0.0	0.0	0.0	0.0	0.0	0.0	0.0	0.0	
SHEER	8.1	12.9	19.7	25.0	28.2	29.9	29.3	28.2	25.8	22.4	17.3	9.7	3.7	
GUNWALE	7.9	12.9	19.1	24.1	27.3	29.4	29.0	27.4	24.9	21.2	16.1	8.6	3.7	
CHINE 3						21.7	23.5	25.3	25.3	23.4				
CHINE 2	7.5	12.1	15.5	17.4	18.6	19.7	20.3	20.8	19.8	17.1	14.3			
CHINE 1	5.7	8.1	8.7	9.7	10.4	11.0	11.5	11.6	11.1	9.8	9.0	5.7	3.0	
KEELSON	1.3	1.3	1.3	1.3	1.3	1.3	1.3	1.3	1.3	1.3	1.2	1.0	0.8	



NORTH ALASKA NUNAMIUT KAYAK

UNIVERSITY MUSEUM, UNIVERSITY OF ALASKA, FAIRBANKS

UA72-78
 LENGTH 19' 2.5" 585.5
 BEAM 23.5" 59.3
 DEPTH TO SHEER 9.3" 23.5
 WEIGHT 29.8 lbs 13.5 kg
 CONSTRUCTED IN 1972 BY SIMON PANEAK OF ANAKTUVUK PASS.
 SCALE 1:8 (IN CENTIMETERS)
 L.W.L. (LOAD WATER LINE) BASED ON 68 kg (150 lbs) MAN SEATED 295.0 cm FROM BOW
 PRISMATIC COEFFICIENT .71
 THEORETICAL TOP SPEED 51 KNOTS
 HULL DISPLACEMENT 9010 lbs 408.7 kg
 LOADED KAYAK UNSTABLE AT 51° HEEL

LINES AND CONSTRUCTION DETAILS

SHEET 1 OF 2
 LINES TAKEN OFF BY DAVID W. ZIMMERLY, MARCH 1977
 DRAFTED BY DANIEL M. MCCLINTON, 1981

THIS KAYAK WAS MADE FOR THE MUSEUM USING LOCAL (ANAKTUVUK PASS) MATERIALS OF WILLOW, DEHAIRD BULL CARIBOU SKIN AND CARIBOU SINEW FOR THE RIBS, COVER AND SEWING. MOST OF THE OTHER WOOD IS CANADIAN WHITE SPRUCE PURCHASED BY THE MUSEUM FROM A FAIRBANKS LUMBER YARD.

HOGGING IN THE FRAME AROUND SECTION 9 WAS CORRECTED FOR AND FAIRED IN THE LINES DRAWINGS TO CONFORM TO WHAT WAS PROBABLY THE ORIGINAL SHAPE.

THE COVER WAS SEWN IN 27 HOURS BY TWO WOMEN INSTRUCTED BY THE BUILDER. THE SEAMS WERE WATERPROOFED WITH CARIBOU TALLOW. POLES CARRIED ON THE DECK WERE USED TO POLE THE KAYAK UPSTREAM IN SHALLOW RIVERS. SIMON REPORTED THAT HIS GRANDFATHER USED THIS TYPE OF KAYAK FOR INTERCEPTING CARIBOU AS THEY CROSSED LAKES AND RIVERS. ACCORDING TO GUBSER (THE NUNAMIUT ESKIMOS' HUNTERS OF CARIBOU), "THE LAST NUNAMIUT KAYAK WAS MADE DURING WORLD WAR II, WHEN AMMUNITION RAN SHORT"