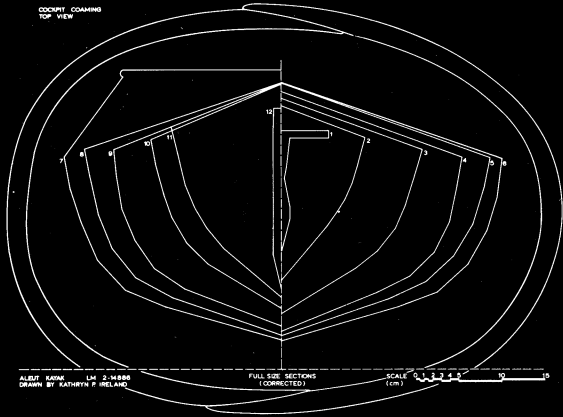


COCKPIT COAMING
TOP VIEW



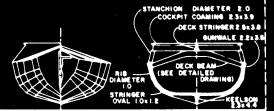
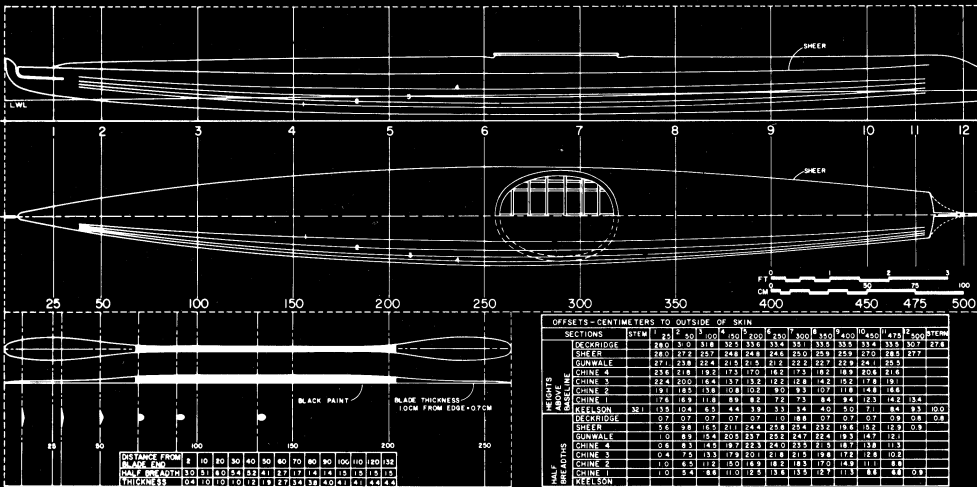
ALEUT KAYAK
LM 2-14886
DRAWN BY KATHRYN F. IRELAND

FULL SIZE SECTIONS
(CORRECTED)

SCALE
1:2.5

BOW END

Looking for a good sea kayak with speed and character? Try lashing this beauty together.



THIS SPECIMEN CONSISTS OF AN UNCOVERED FRAME, A DOUBLE HULL AND A SAIL. ALL PARTS ARE OF SUPERIOR WORKMANSHIP, ALTHOUGH LATER REPAIRS SUCH AS THE COCKPIT COAMING STANCHIONS ARE OF INDEPENDENT QUALITY. THESE STANCHIONS ARE TOO LONG FORMING THE COAMING OUT OF ITS OTHERWISE LEVEL PLANE. THE STERN HOLE SERVES ONLY TO LIGHTEN THE FRAME AND IN USE WAS COVERED OVER WITH SKIN. ALEUT KAYAK RIBS ARE LOCATED ON DECKBUM CENTERS INSTEAD OF BEING STAGGERED TO MISH THEM AS ON ESKIMO KAYAKS. FOLLOWING STANDARD ALEUT PRACTICE THE KEELSON IS IN THREE SECTIONS WITH CURVED NOTCHED SCANT JOINTS. THE ORIGINAL PART OF THE FRAMEWORK WAS PAINTED RED.

ALEUT KAYAK
LOWIE MUSEUM, UNIVERSITY OF CALIFORNIA, BERKELEY

LM 2-14886

LENGTH 16' 8 1/2" 509.8
BEAM 20.4" 51.7
DEPTH TO SHEER 8.7" 22.0
WEIGHT 26.5 lbs 12.0 kg

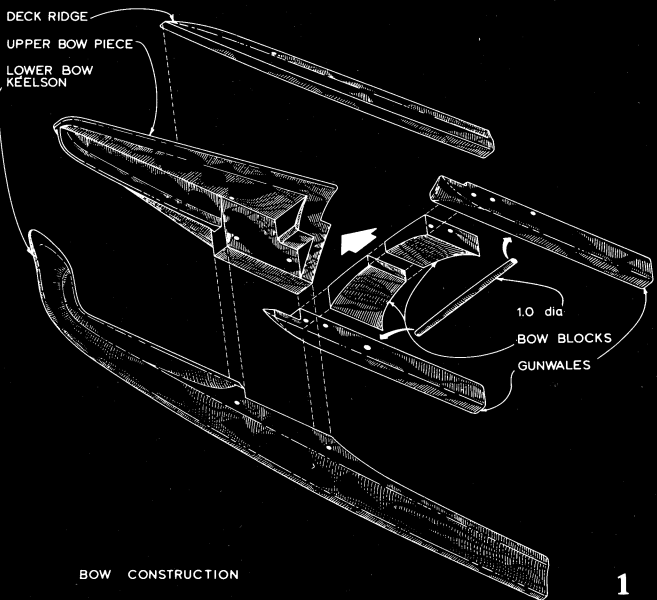
COLLECTED BY MARGARET LANTIS, 1934.
KATA ISLAND, ALASKA

SCALE 1/8" (IN CENTIMETERS)

L.W.L. (LOAD WATERLINE) BASED ON 68 kg (150 lb) MAN SEATED 267.0cm FROM BOW
DISPLACEMENT TO SHEER 1007.7cm 275.2 kg
C.P. (PRISMATIC COEFFICIENT) .50
THEORETICAL TOP SPEED 4.9 KNOTS
LOADED KAYAK UNSTABLE AT 22° HEEL

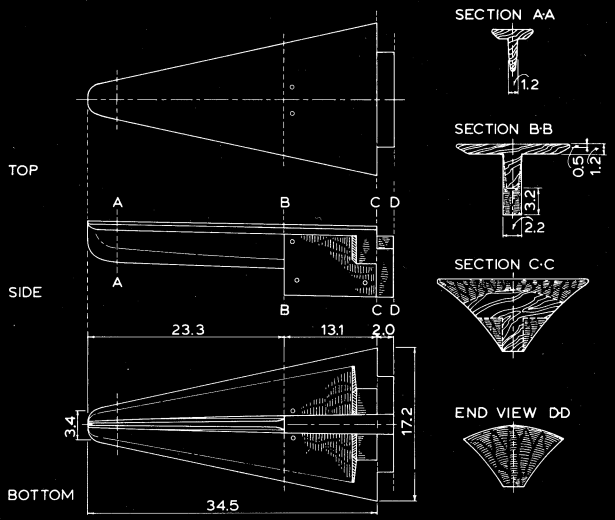
LINES AND CONSTRUCTION DETAILS

SHEET 1 OF 1
LINES TAKEN OFF BY DAVID W. ZIMMERLY, NOVEMBER 1978
DRAFTED BY GAIL F. MERRIGHT, 1980



BOW CONSTRUCTION

1



UPPER STEM PIECE

2